



# PSP Down- and Upgrading Guide

---



**By Simon Slangen**

This manual is intellectual property of MakeUseOf. It must only be republished in its original form. Using parts, or republishing altered parts of this guide is prohibited.

## About this Guide

This guide, composed and written by Simon Slangen, was originally published over two parts on [MakeUseOf.com](https://makeuseof.com). Be sure to give this one a look – you can view the parts respectively [here](#) and [here](#).

Questions that aren't answered in the [FAQ](#) can always be directed to the comments section below these article.

This guide is released under creative commons and may be spread freely, if in its original form.

## WARNING

### PSP Compatability

Nearly all PSPs are crackable (or hackable, depending on your point of view). However, there are two major exclusions.

- **PSP-3000 and up<sup>1</sup>**
- **PSP-2004 with a TA88v3 motherboard<sup>2</sup>**

You can view your PSP model at the bottom of the device.



The 3000-series and the ones with a TA88v3 motherboard are the newest PSP's on the market and the Pandora Battery does not work with these models.

If you have one of these, do not proceed!

### Legal disclaimer

*Using these methods is 100% legal (although Sony obviously doesn't like it), but it **CAN** brick your PSP (every model except the PSP-3000 can be unbricked using a working Pandora Battery, though). It may also void the warranty of your PSP system as you will be working with delicate parts like the PSP's flash memory.*

*If you follow these steps, you should be fine, but if you screw up, Make Use Of won't be held legally liable. If this sounds like too much risk to you, please don't go any further.*

<sup>1</sup> This means your version number is equal to, or greater than 3000

<sup>2</sup> You know that your PSP has a TA88v3 motherboard without opening it up, if your PSP-2004 came with 4.01 or 4.05 pre-installed.

*This page intentionally left blank*

## Table of Contents

About this Guide.....	2
<b>WARNING</b> .....	3
An introduction to PSP homebrew .....	6
Downgrading through the use of software (firmware 3.50 and below) .....	7
a) Downgrading PSP from Firmware 2.00 to 1.50.....	8
b) Downgrading PSP from firmware 2.80 to 1.50 .....	11
c) Downgrading PSP from Firmware 2.80 to 1.50 (alternative way) .....	13
d) Downgrading PSP from firmware 3.03 to 1.50.....	17
e) Downgrading from firmware 3.50 to 1.50.....	20
Upgrading your PSP from FW 1.50 to a custom firmware .....	22
Downgrade through the use of a Pandora Battery (all FW versions) .....	25
Compatability note .....	25
Making Your JigKick Battery .....	26
a) Creating a JigKick Battery with a Custom Firmware PSP .....	26
b) Creating a JigKick Battery out of a spare battery .....	27
c) Purchasing a JigKick Battery .....	30
Making Your Magic Memory Stick .....	31
Making a MMS without a CFW PSP.....	31
Making a MMS Using a CFW PSP.....	32
Using your JigKick Battery .....	34
FAQ – Frequently Asked Questions .....	35
Thank You! .....	37

## An introduction to PSP homebrew

For those of you who are new to the concept of hacked PSPs, custom firmware might not sound so familiar. Custom firmware basically is a modified, which gives you all the possibilities of the official firmware, but also enables the use of homebrew.

Homebrew are applications developed not by Sony, but by the community. The different types of homebrew applications range from text editors to ISO<sup>3</sup> loaders. Enabling this homebrew makes the PSP an open platform. It allows you to add the functions and/or applications that Sony did not take care of.

Of course there are two sides to this coin. When you're dealing with an open platform, piracy arises. Due to this (and probably some other reasons as well), Sony has been trying to repress homebrew as much as possible. Where these applications could initially be run on the first 1.00 and 1.50 firmware PSPs, users who updated weren't be so fortunate.

But the community (or, hackers) did not accept defeat. Leaks were exploited and one after another, the firmwares fell. Up to today, neither of the groups have given up, and we are still experiencing a constant battle between the homebrew community and Sony.

Instead of enabling people to run homebrew, the PSP hacking groups have started building their own firmwares. These custom firmwares are nearly identical to the official ones, only better. They have all the functions of the original firmware, but also have added functionality and the ability to run homebrew. At some point, people stopped trying to run homebrew on these official firmwares and just developed software to downgrade and/or switch PSP to custom firmware.

There are a lot of different ways to downgrade your PSP. Depending on your firmware version, you might be able to use software techniques, or the Pandora Battery, which we'll explain later on.

This manual was first posted over two parts on [MakeUseOf.com](http://MakeUseOf.com).

---

<sup>3</sup> An archive file of an optical disk (UMD in this context)

### Downgrading through the use of software (firmware 3.50 and below)

We'll be starting with firmware versions 1.00 through 3.50.

As there's a lot of different variables and different ways to work with them, we'll be sending you up and down through this guide to the steps that matter for you. Therefore, for all the speedreaders out there: **always read the text in bold red.**

We want to install a custom firmware (m33 to be exact). Sadly, if we're using the methods below, we need to go through FW<sup>4</sup> 1.50. If (though this is very unlikely) your PSP is still equipped with FW version 1.00, you'll have to upgrade to 1.50. To do that, download the update file [here](#) and follow the instructions in the file description.

To check which firmware version you're on, go to Settings -> System Settings -> System Information. Your firmware version will be stated right between your MAC Address<sup>5</sup> and your Nickname.



<sup>4</sup> An abbreviation for **firmware**

<sup>5</sup> A quasi-unique identifier assigned to the network adapter by the manufacturer for identification

### a) Downgrading PSP from Firmware 2.00 to 1.50

This method uses the tiff<sup>6</sup> exploit. People found out that it was possible to run tiny bits of code through tiff files. In this case, a tiff file is used to change the version number to 1.00, after which you'll be able to update to 1.50.

#### Files you need

Please use google if the links no longer work.

- [MPH Downgrader](#) (alternative link [here](#))
- [Firmware 1.50](#) (alternative link [here](#))

#### Step One: Format your memory stick

This is not always necessary, but it makes the upgrading easier, so be sure to make a back up of all your important files. To do that, Go to Settings -> System Settings -> Format Memory Stick™ and confirm twice.



#### Step Two: File Placement

Go to Settings -> USB Connection

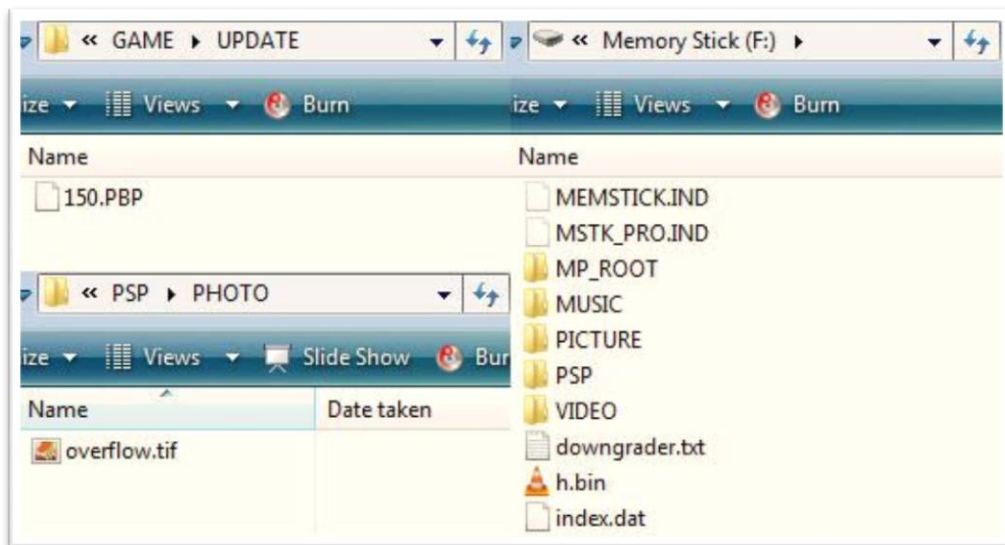
Put the EBOOT.PBP<sup>7</sup> file in X:\PSP\GAME\UPDATE (where X: is your PSP) and extract the MPH Downgrader zip in your PSP root (main folder). If you are prompted about replacing any files, click 'Yes to All'.

---

<sup>6</sup> An image format

<sup>7</sup> The default name of an executable PSP file

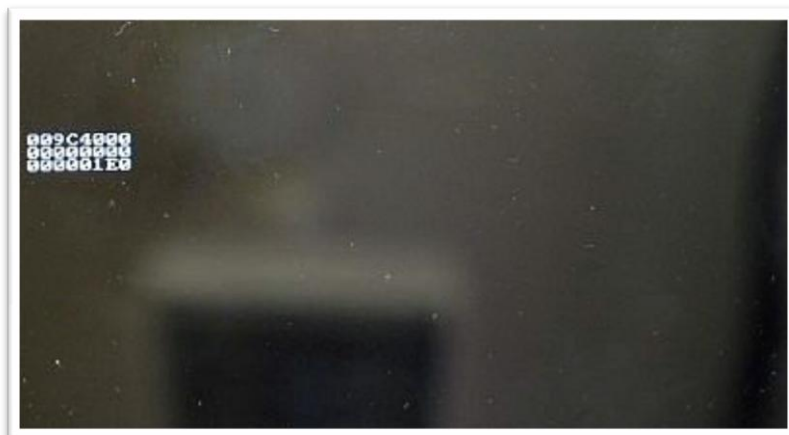




### Step Three: Downgrading

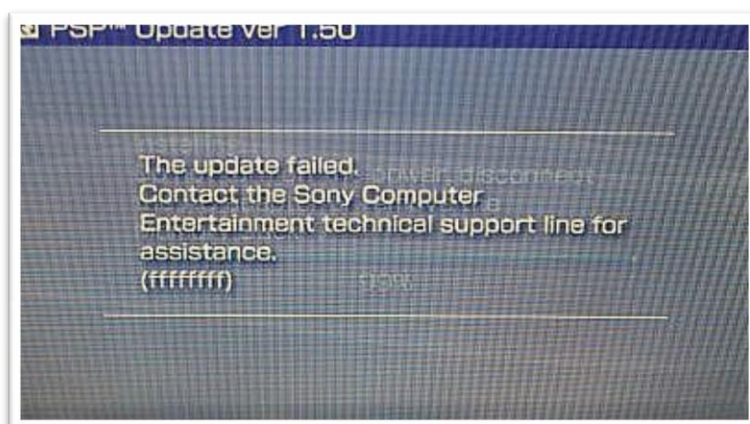
Go to Photo -> Memory Stick™. You'll see a black screen with some numbers. Don't be afraid, this is just the program doing its work.

Wait about 30 seconds and restart your PSP (hold your power switch up until it switches off and turn it back on).



Now, go to Game -> Memory Stick™ and open 'PSP™ Update ver 1.50'

You'll see an error at the end of the update. Don't be nervous, this is perfectly normal. Restart the PSP manually. You'll then encounter another error, press O to restart.

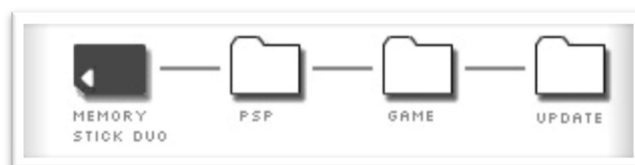


Congratulations, you've now got Firmware 1.50!

### b) Downgrading PSP from firmware 2.80 to 1.50

First of all, **if you have a lower firmware version, you'll have to upgrade to 2.80.**

Download [this file](#) and put it in X:\PSP\GAME\UPDATE (with X: being your PSP). Then go to Game -> Memory Stick™ and open 'PSP™ Update ver 2.80'.



This method also uses the tiff exploit, which enables small pieces of code to be run through tiff files.

If this method does not work for you, [check below](#) for an alternative updating way.

#### Files you need:

Please use google if the links are no longer work.

- [HEN for Firmware 2.80](#) (alternative link [here](#))
- [v2.80 Downgrader](#) (alternative link [here](#))
- [Firmware 1.50](#) (alternative link [here](#))

#### Step One: Format your memory stick

This is not always necessary, but it makes the upgrading easier, so be sure to make a back up of all your important files. Go to Settings -> System Settings -> Format Memory Stick™ and confirm twice.



#### Step Two: File Placement

Unrar the HEN<sup>8</sup> archive. Move the contents from the MS\_ROOT folder to your PSP's root<sup>9</sup>.

Also move the contents of the ta82downgrader.zip MS\_ROOT folder to your PSP's root. Rename the FW<sup>10</sup> 1.50 EBOOT.PBP file to UPDATE.PBP and move it to X:\PSP\GAME\UPDATE (with X: being your psp).

<sup>8</sup> Homebrew Enabler

<sup>9</sup> Your main PSP folder

<sup>10</sup> An abbreviation for firmware

### Step Three: Downgrading

First of all, we're going to activate HEN. After that, we browse to the Photo menu and try to open the HEN\_280 folder. If the PSP just freezes, reboot and try again. At some point the screen will flash in a specific color.

- If red, the program ran, but if it failed, you'll have to try again.
- If blue, the program succeeded and is running. Your PSP will automatically reboot.

Next we're going to run the downgrader. To do this, go to Game -> Memory Stick™ and open the PSP™ Update ver X.YZ (you'll need at least 75% battery for this).



At the end of the installation, you'll be prompted to press X, after which your PSP will restart. Enjoy, you've now got Firmware 1.50!

### c) Downgrading PSP from Firmware 2.80 to 1.50 (alternative way)

First of all, **if you have a lower firmware version, you'll have to upgrade to 2.80.**

Download [this file](#) and put it in X:\PSP\GAME\UPDATE (with X: being your PSP). Then go to Game -> Memory Stick™ and open 'PSP™ Update ver 2.80'.



#### Files you need:

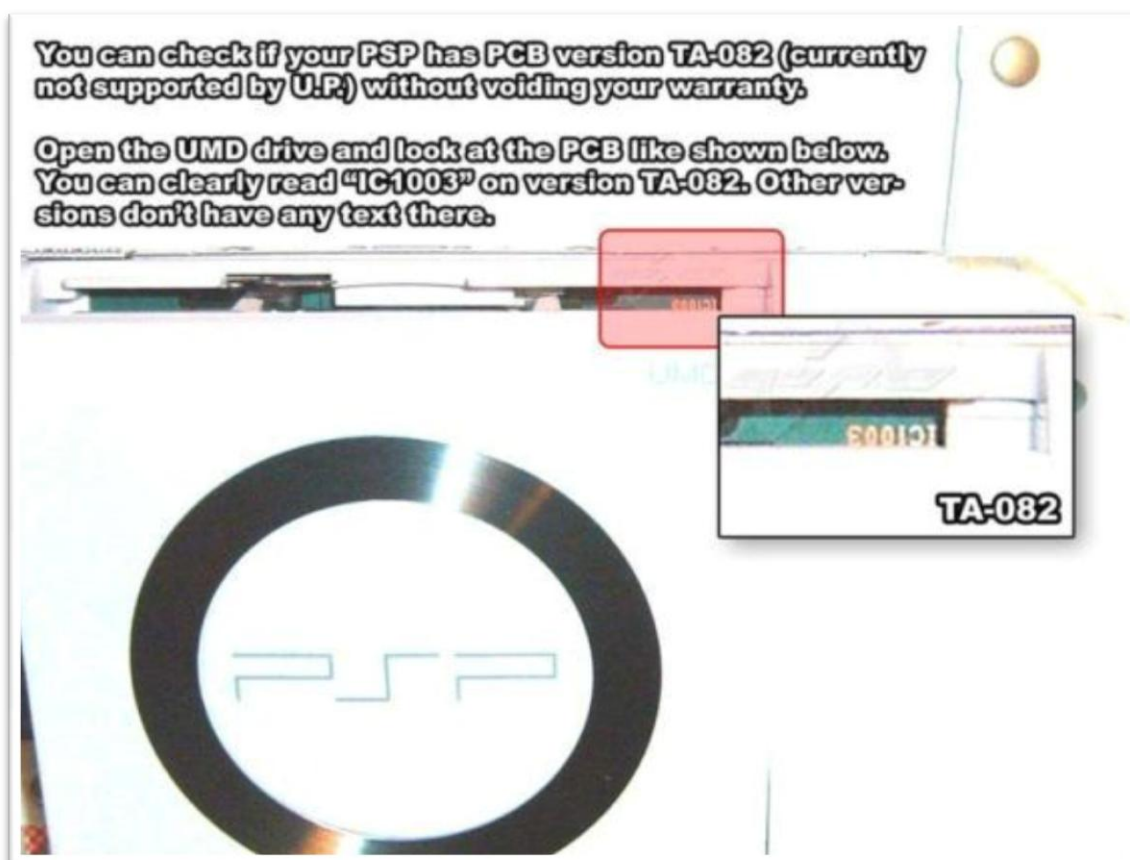
Please use google if the links are no longer work.

- [2.80 Easy Downdater](#) (alternative link [here](#))
- [eLoader/xLoader](#) (alternative link [here](#))
- [PatchSFO](#) (alternative link [here](#))
- [Firmware 1.50](#) (alternative link [here](#))

#### Step One: Make sure you don't have a TA-082 motherboard

If you use this updating technique with a TA-082<sup>11</sup> PSP you'll be left with a shiny brick.

If you DO have a TA-082 PSP, [check above for another updating way](#).



<sup>11</sup> A specific motherboard type that isn't supported



### Step Two: Format your memory stick

This is not always necessary, but it makes the upgrading easier, so be sure to make a back up of all your important files. Go to Settings -> System Settings -> Format Memory Stick™ and confirm twice.



### Step Three: File placement

Go to Settings -> USB Connection. Open the eLoader installation file. It will try to automatically connect to your PSP. If it fails to do so, just select the PSP root (main folder) manually. You can leave all the other settings alone.

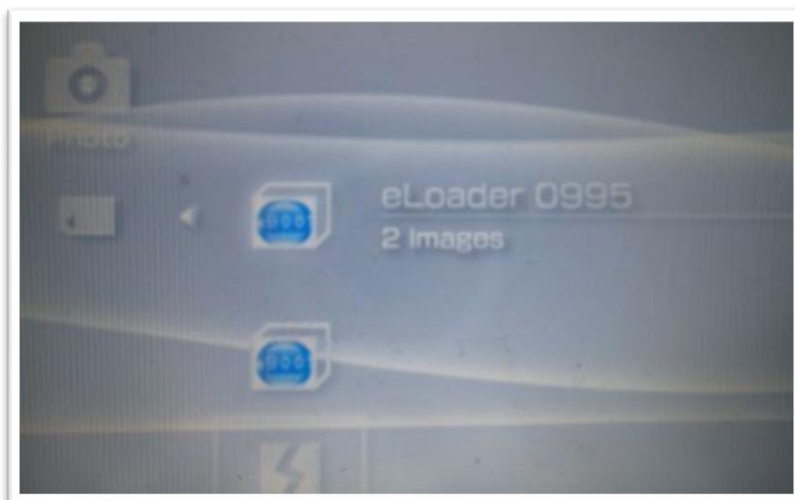
Unzip the PatchSFO EBOOT to X:\PSP\GAME\PatchSFO and the FW 1.50 EBOOT.PBP file to X:\PSP\GAME\UPDATE (where X: is your PSP).

Open the 2.80 Easy Downdater installation file and select your PSP's root. Press next to install the files.



### Step Four: Downgrading

First we're going to need to patch the files with eLoader. To do so, go to Photo -> Memory Stick™, and hold the start button while hovering over the eLoader folder. There's a possibility that your PSP crashes. If so, just do a hard reboot by holding the power switch and try again.

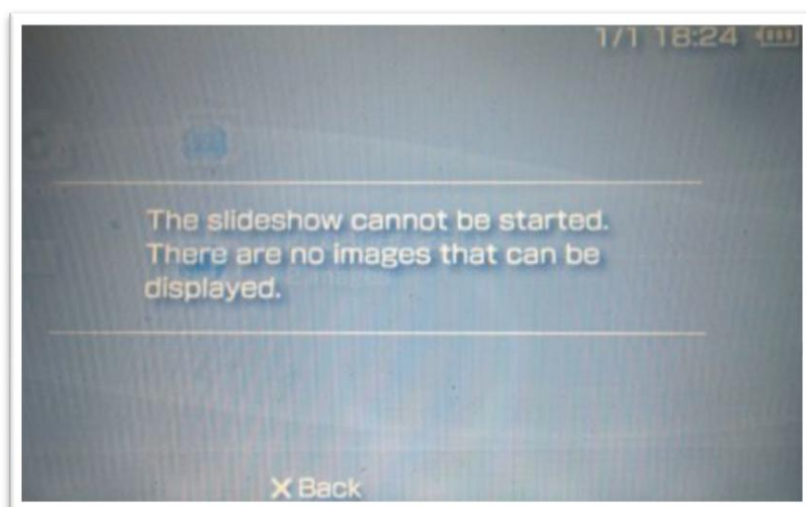


Once inside the eLoader application, open PatchSFO and press on X to confirm. PatchSFO will now patch all files. This means we can open Easy Downgrader through xLoader in a moment. **Do not try to open the installer with eLoader**, as eLoader and xLoader are two totally different applications. Opening Easy Downgrader with eLoader **might even brick your PSP**.



Once PatchSFO is done, press start to reboot your PSP.

Now we're going to open xLoader. Again, hold start for a few seconds when hovering over the xLoader folder. If your PSP crashes, do a hard reboot and try again. At one moment, you'll get an error message as shown below. **This means xLoader has successfully started.** You'll also be able to view the files contained within the folder now.



Now we can start the updater. Go to Game -> Memory Stick™ and open the installer (1.50DDforTA-079~081FW2.80PSP). Press O to start the installation.

At the end of the update you'll see an error. Don't be nervous, this is perfectly normal. Restart the PSP by pressing O.



Congratulations, you're now running Firmware 1.50!



#### d) Downgrading PSP from firmware 3.03 to 1.50

First of all, **if you have a lower firmware version, you'll have to upgrade to 3.03.**

Download [this file](#) (alternative link [here](#)), rename it to EBOOT.PBP and put it in X:\PSP\GAME\UPDATE (with X: being your PSP). Then go to Game -> Memory Stick™ and open 'PSP™ Update ver 3.03'.



**You'll need an unpatched copy of GTA:LCS for this method.**

This means that it contains a version 2.00 Firmware update file. Though this might strike you as odd at first, it's genius when you know the details.

When Sony closed the tiff-gate, the hackers went looking for other glitches in the PSP firmware. At first they couldn't find any, but then they made a very unexpected move. They used a glitch in [GTA:LCS](#), a game for the PSP! Now, they could load nearly any piece of code using save files. Sony didn't like this though, so they made sure this wasn't possible with all next releases and/or firmwares.



**I only suggest this method if you actually own this game**, don't go running to the store to get a copy. Next time we'll talk about a way to downgrade and unbrick each and every PSP (you need another PSP for it, though).

Check [this](#) article to see if your game is patched or not, or just insert it in your PSP and look what Firmware version it contains (2.00 is an unpatched one). Check [this](#) as well.

If you haven't got a copy of GTA:LCS in your possession, but you do have a copy of Lumines, skip down to [method d below](#).

#### Files you need:

Please use google if the links are no longer work.

- An unpatched copy of [GTA:LCS](#)
- [3.03 Downgrader](#) (alternative link [here](#))
- [Firmware 1.50](#) (alternative link [here](#))

### Step One: Format your memory stick

This is not always necessary, but it makes the upgrading easier, so be sure to make a back up of all your important files. Go to Settings -> System Settings -> Format Memory Stick™ and confirm twice.



### Step Two: File placement

UnRAR the downgrader and move all the files from the MS\_ROOT folder in the root (main folder) of your PSP. If you are prompted about replacing any files, click 'Yes to All'.

Rename the version 1.50 Firmware file from to UPDATE.PBP and drop it in X:\PSP\GAME\UPDATE (with X: being your PSP). Be sure **not to overwrite EBOOT.PBP** in the UPDATE folder!

### Step Three: Downgrading

Start the game. As soon as it starts loading the savefile the screen will turn black and restart. Normally, you are now running HEN (Homebrew Enabler) which allows you to run homebrew files.

To check, go to System -> System Settings -> System information and look at your system version. It should state '303 HEN'. If not, start over.

You can now start to downgrade. Go to Game -> Memory Stick™ and open the PSP™ Update ver X.YZ



If you have an unpatched TA-082 or TA-086 motherboard, you'll be asked if you want to patch it. You can only proceed with the installation if you do. Next, you'll encounter one last confirmation screen, press X to continue.



Once the installation is complete, you can press X to restart your system. Congratulations, you now have a PSP running on firmware 1.50!

If you get an error saying that the 'settings are corrupt', you'll have to restore your pre-installation network settings manually by going to Game -> Memory Stick™, starting the NetConfigBackup utility and selecting restore.

### e) Downgrading from firmware 3.50 to 1.50

First of all, **if you have a lower firmware version, you'll have to upgrade to 3.50.**

Download [this file](#) and put it in X:\PSP\GAME\UPDATE (with X: being your PSP). Then go to Game -> Memory Stick™ and open 'PSP™ Update ver 3.50'.



A little déjà vu here, the hacker community did it again! Instead of using Liberty City (more details [above](#)), they used a save-game exploit and a copy of the nifty puzzle game Lumines to get in. Note that the installation is also very similar to the GTA version.

#### Files you need:

(use google if the below links are offline)

- An unpatched copy of [Lumines](#)
- [Universal 3.50 HEN/Downgrader](#) (alternative link [here](#))
- [Firmware 1.50](#) (alternative link [here](#))

#### Step One: Format your memory stick

This is not always necessary, but it makes the upgrading easier, so be sure to make a back up of all your important files. Go to Settings -> System Settings -> Format Memory Stick™ and confirm twice.



#### Step Two: File placement

UnRAR the downgrader and move all the files from the MS\_ROOT folder in the root (main folder) of your PSP. If you are prompted about replacing any files, click 'Yes to All'.

Rename the version 1.50 Firmware file from to UPDATE.PBP and drop it in X:\PSP\GAME\UPDATE (with X: being your PSP). Be sure **not to overwrite EBOOT.PBP** in the UPDATE folder!

### Step Three: Downgrading

Start the game. As soon as it starts loading the savefile the screen will turn black and restart. Normally, you are now running HEN (Homebrew Enabler) which allows you to run homebrew files.

To check, go to System -> System Settings -> System information and look at your system version. It should state '303 HEN'. If not, start over.

You can now start to downgrade. Go to Game -> Memory Stick™ and open the PSP™ Update ver X.YZ



If you have an unpatched TA-082 or TA-086 motherboard, you'll be asked if you want to patch it. You can only proceed with the installation if you do. Next, you'll encounter one last confirmation screen, press X to continue.



Once the installation is complete, you can press X to restart your system. Congratulations, you now have a PSP running on firmware 1.50!

If you get an error saying that the 'settings are corrupt', you'll have to restore your pre-installation network settings manually by going to Game -> Memory Stick™, starting the NetConfigBackup utility and selecting restore.

## Upgrading your PSP from FW<sup>12</sup> 1.50 to a custom firmware

Now you're in Firmware 1.50, we can upgrade to a custom firmware. The big advantage is that we'll have all the advantages of the higher firmwares in combination with the ability to run homebrew.

### Things we need:

- [Custom Firmware 3.52 M33](#) (alternative link [here](#))
- [Custom Firmware 3.52 M33-3](#) (alternative link [here](#))
- The latest M33 Firmware version ([5.00-3](#) at the time of writing - [mirror](#))
- The parallel official firmware ([5.00](#) in this case - [mirror](#))
- [Firmware 3.51](#) (alternative link [here](#))
- [Firmware 1.50](#) (alternative link [here](#))

### Step One: Format your memory stick

This is not always necessary, but it makes the upgrading easier, so be sure to make a back up of all your important files. Besides, you've probably got a lot of unnecessary junk on there from the downgrading process.

Go to Settings -> System Settings -> Format Memory Stick™ and confirm twice.



### Step Two: Upgrade to Custom Firmware 3.52 M33

Before we can upgrade to the latest version of the M33 firmware, we must first do an initial upgrade to one of the first M33 versions, CFW 3.52.

#### a) File placement

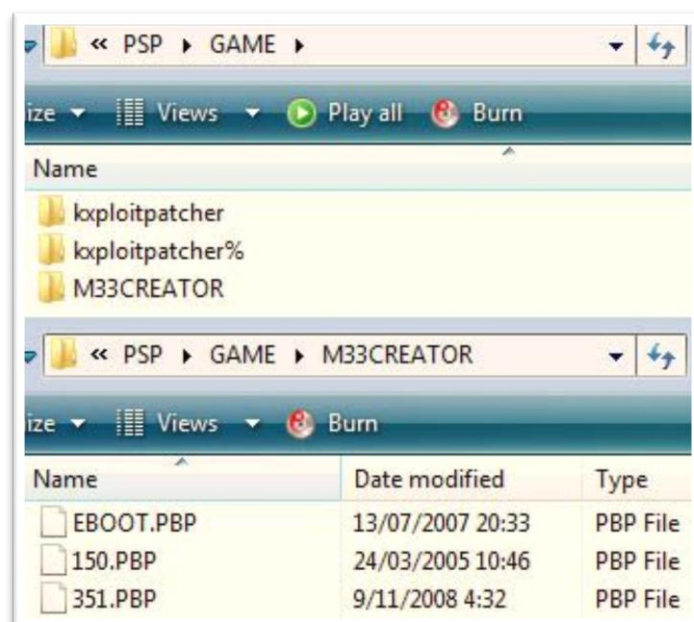
First of all, unRAR all the downloaded files.

**If you are on FW 1.50**, copy 'kxploitpatcher and kxploitpatcher%' to the directory X:/PSP/GAME (where X: is your PSP). If you are on another custom firmware, skip this step.

Copy the M33CREATOR folder from the 3.52 M33 rar to X:/PSP/GAME (where X: is your PSP). Rename the 1.50 and 3.52 EBOOT files respectively 150.PBP and 352.PBP and move them to the M33CREATOR as well.

---

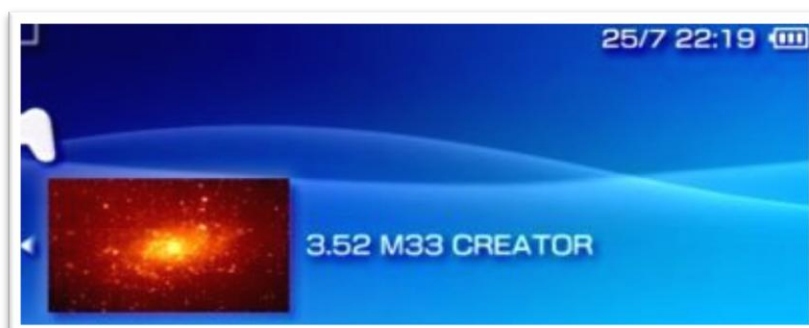
<sup>12</sup> An abbreviation for firmware



### b) Updating

**If you are on FW 1.50** go to Game -> Memory Stick™ and open KXploit Permanent Patcher. This will permanently allow non-patched eboots to load. When prompted, press X. Your PSP will restart automatically when done. If you are on another custom firmware, skip this step.

Next, start 3.51 M33 CREATOR, also in the Game's Memory Stick™ menu. After it has loaded and rewritten the firmwares (this can take a while), you can press X to restart.



M33 CREATOR has now built an update file. Once again, go to Game -> Memory Stick™ and open 3.52 M33UPDATE. You need to have at least 75% battery left to do this. You'll be asked for confirmation. Press X to continue or R to exit.

Press X at the end of the installation to turn your PSP off, turn it back on manually. Congratulations, you are now on 3.52 M33!

Let's get rid of all those unnecessary files. **Format your memory stick again** as explained above.



### Step Three: Update to 3.52 M33-3

Unrar the 3.52 M33-3 files. Drop the PSP folder in your PSPs root (main folder).

Go to Game -> Memory Stick™ and open the nameless utility. You'll get a nice read about a website they don't seem to like. Press X to do the update, this one will go real quick.

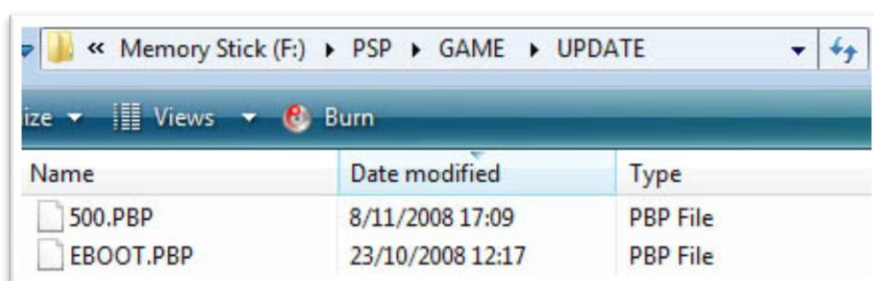
### Step Three: Upgrade to the latest Custom Firmware

#### a) File placement

If you haven't extracted the downloaded firmware yet (we're going to use 5.00 M33-3), do it now.

Move the unrarred UPDATE folder to X:\PSP\GAME\UPDATE (with X: being your PSP).

Rename the official firmware in a plain three-number format, in the like of 500.PBP, and the update to EBOOT.PBP



#### b) Updating

Go to Game -> Memory Stick™ and open the installation file. After verifying the eboot, it'll ask you for confirmation. Press X to continue.

Follow the on-screen instructions to update. The update will take five minutes or less.

Congratulations, you are now on the latest M33 custom firmware!



## Downgrade through the use of a Pandora Battery (all FW versions)

This'll guide you through a method that works for nearly all PSP's, regardless of the current firmware version. It'll even allows you to unbrick<sup>13</sup> PSP's.



Like mentioned in the warning, the only PSP's that aren't supported are the PSP-3000 and the PSP-2004 with an AT88v3 motherboard. Read the warning for more information.

The Pandora Battery method requires either the use of a PSP with custom firmware, or a spare battery pack. So if you haven't got one of those, but you've got firmware 3.50 or below, please use the appropriate part of this manual.

Alternatively, you can also purchase a pre-pandorised battery pack.

This section of the guide is divided into three parts, depending on the 'ingredients' you've got at hand.

### The Pandora Battery

The homebrew community was always looking for different ways to get in. Sadly, Sony kept closing these entrances one by one, and there are only so many doors in a house.

At a certain moment, there was a very unexpected turn - a new way-in that worked for all available PSP's (at that moment). They had ran out of doors, but they had found a sledgehammer! They reprogrammed the PSP's battery – becoming a JigKick Battery, which enabled them to overwrite the PSP's flash memory and install a custom firmware.

### Compatibility note

Batteries that are not compatible:

- 2600 mAh Mega Battery Pack
- Sony PSP-280 2200mAh (Fake)
- Sony PSP Bloc-Battery pack 3.6v 1800 mAh
- Battery 3600mAh, unknown brand, (China made model NK-RH008) (Fake)
- Battery Pack, unknown brand, (lithium) 3.6v 3600 mAH (Fake)
- Intec 2200 mAh

All memory sticks with the “Pro Duo” tag **should** work. Official ones will work better though. Also, formatting issues might occur with memory sticks of 8GB and up.

---

<sup>13</sup> A PSP is bricked when it stops working due to software abnormalities

### Making Your JigKick Battery

#### a) Creating a JigKick Battery with a Custom Firmware PSP

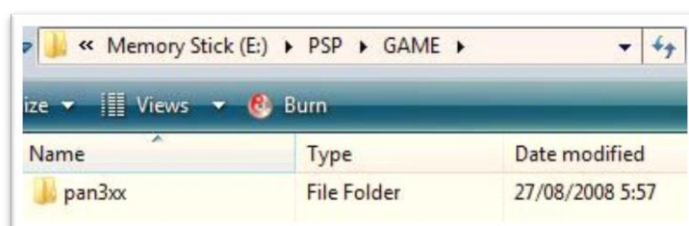
This is a quick way to create a JigKick battery – you'll need a CFW PSP though. If you haven't got one, try borrowing one from a friend's.

##### What you need:

- [Pandora Installer for 3.xx Revision 4b](#) (alternative link [here](#))
- A Phat<sup>14</sup> PSP with custom firmware

##### What You need to do:

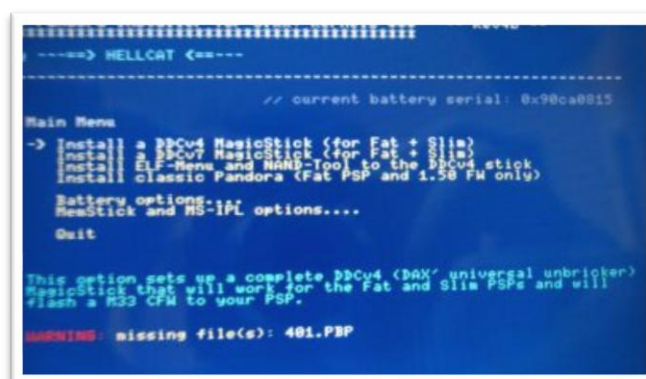
Start out by putting the Pandora Installer on your CFW PSP. Do so by moving the pan3xx folder from the downloaded archive to E:\PSP\GAME (where E: is your PSP).



Go out of USB mode, navigate to **Game -> Memory Stick™** and click on the Pandora Installer to start the application.



Next, press battery options to produce your Pandora (JigKick) Battery. You can also make a back-up of your battery's serial number here. This can be used while restoring your battery later on. As an alternative, you can also use an automatically generated serial number. This should work fine, but make a dump if you want to play safe.



While you're at it, [look here](#) how to make a MMS with this same program. Mind, you can skip the first few steps.

<sup>14</sup> The 'fat', and first version of the PSP

### b) Creating a JigKick Battery out of a spare battery

If you can't get your hands on a CFW PSP, you can still hardmod your battery. This involves cutting it open and quite more risk than the above method. Overheating the battery might trigger an explosion, so proceed with caution and completely at your own risk.

Also, don't go buying an extra battery for this method, buying a TOOL or Jigkick battery online is both cheaper and more safe.

The following steps are **courtesy of p1220drs**, over at dcmu.co.uk. Click [here](#) to go to the original thread.

#### Phat Battery

Split the battery open by running something along the seams that run around the edge. It's advised to use something plastic, like a guitar pick or a disposable picnic knife. Metal tools should work as well, but touching the circuit board can cause a shorting.

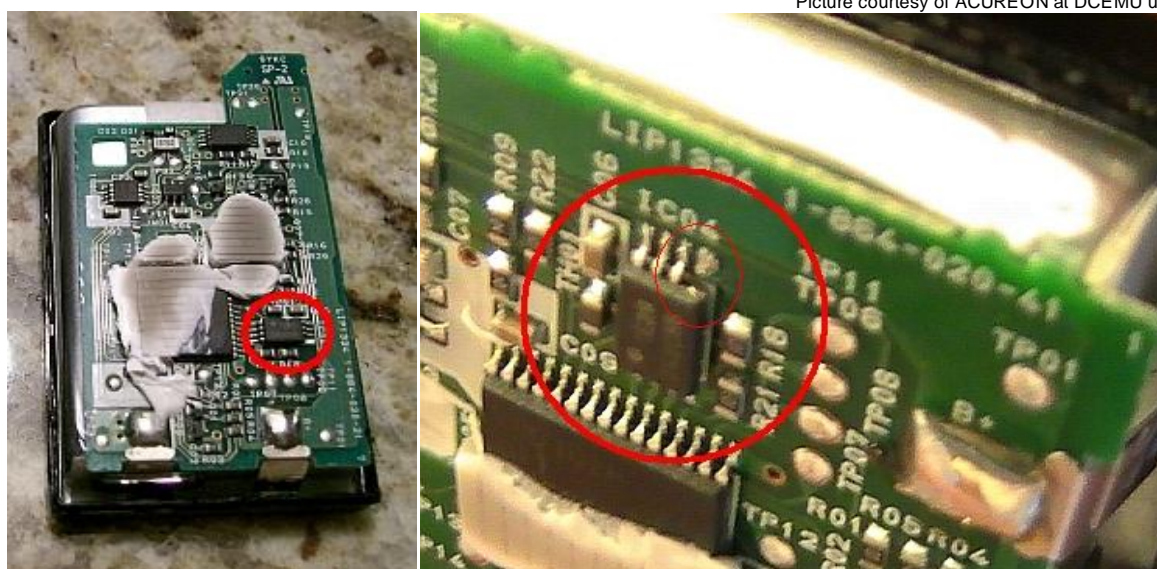
Be careful around the top, as several crucial connections lie here.

Once you've opened the battery, locate a tiny black square at the right bottom. This should contain writing such as TExx and S93056. There are several small pins located at the sides of the square.

There'll also be writing near one end of the square, e.g. ICO4. You'll need to remove the pin that is located below the last letter (4 in this case).

While removing the pin, make sure you don't touch any of the other ones. This will also result in a shorting and a useless battery.

Picture courtesy of ACUREON at DCEMU uk



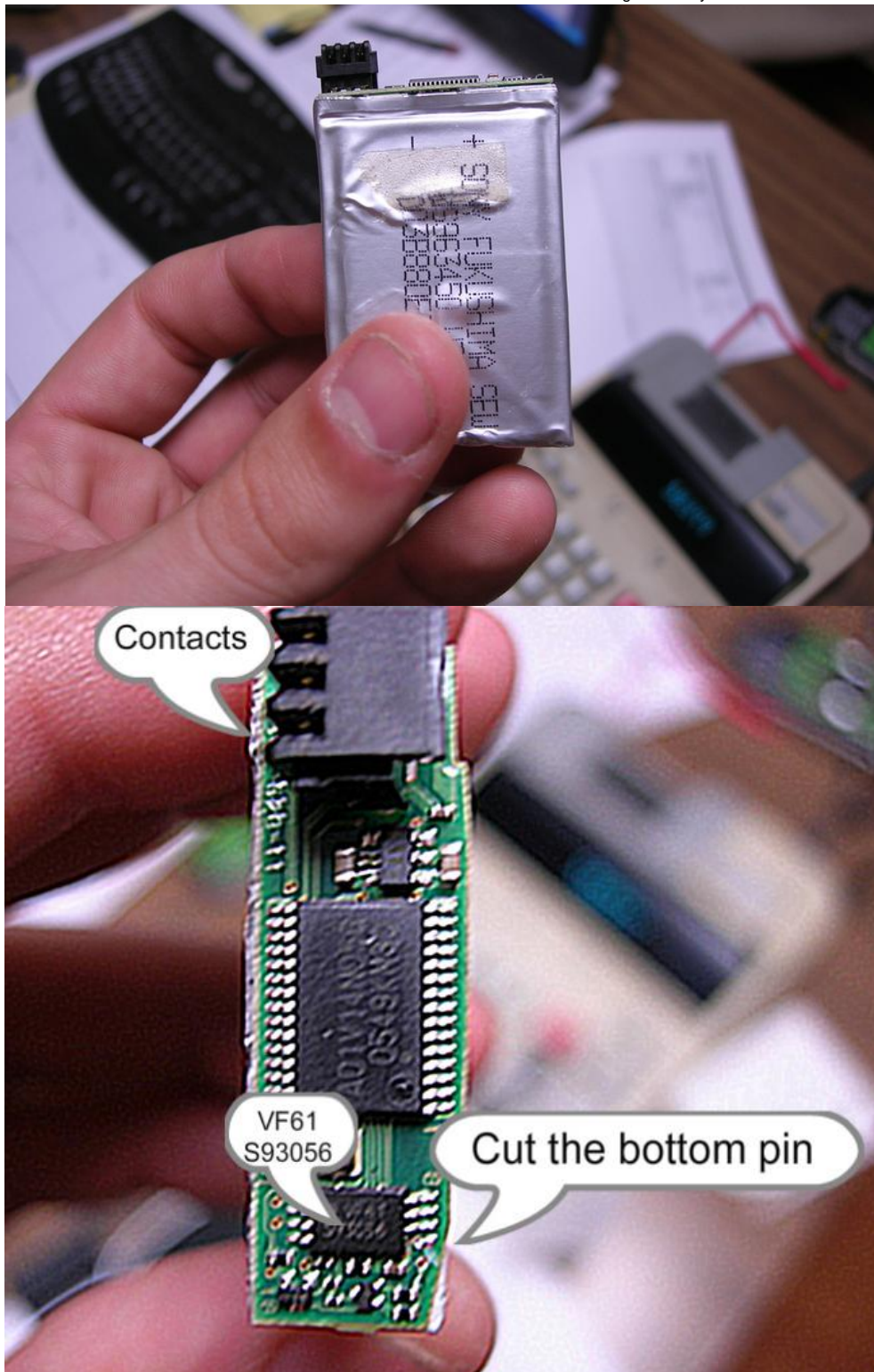
When you're done, you can fit the battery back together using glue or tape.

You've now got a Pandora- or Jigkick Battery, but you still need a Magic MemoryStick, you can find out how to make one through your PC further on in the guide.



Below are several pictures of another type of battery. This one is wrapped in plastic and has a circuit board attached to the top. The battery at hand is a Sony 1800mAh.

Image courtesy of SMAX at DCEMU uk



### Slim Battery

The slim battery looks a little different than the Phat one, but the concept remains the same.

Split the battery open by running something along the seams that run around the edge. It's advised to use something plastic, like a guitar pick or a disposable picnic knife. Metal tools should work as well, but touching the circuit board can cause a shorting.

You'll notice a small black box near the battery's contact points.

Either cut the pin at the top left, or cut the circuit board connection. When cutting the pin, make sure you don't touch any of the other ones, as this'll cause a shorting and a useless battery.

Image courtesy of Gandalf at PSP Crazy



When you're done, you can fit the battery back together using glue or tape.

You've now got a Pandora- or Jigkick Battery, but you still need a Magic MemoryStick, you can find out how to make one through your PC further on in the guide.

### c) Purchasing a JigKick Battery

Of course it could also happen that you don't have any friends with a (custom firmware) PSP, nor a spare battery. Instead of buying a brand new battery to cut open, you can always spend less money for more certainty.

Available on eBay, Amazon and various other websites are 'Tool', or 'jigkick' batteries. These are batteries that are already pandorised (i.e. you'll only need a Magic Memory Stick)!

Besides this battery, you'll still need a MMS. You can find out how to make one further on in the guide.



## Making Your Magic Memory Stick

### Making a MMS without a CFW PSP

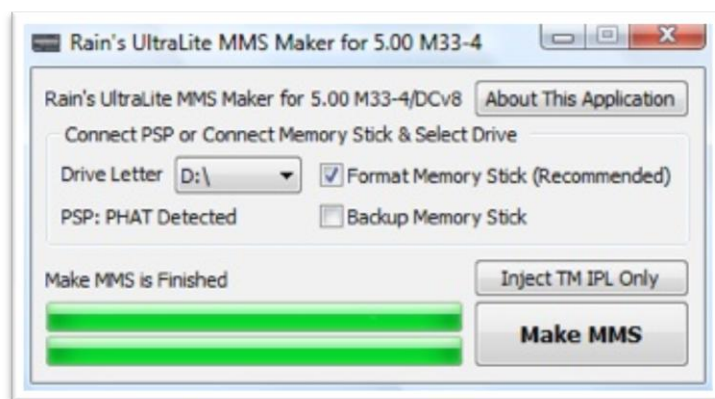
This is the easiest way to get your MMS, as it all happens on your computer and no PSPs are involved. Using this method also allows you to go straight to CFW 5.00 M33-4.

If this method's no good for you (e.g. because you've got a Mac or Linux system), you can always see how to make one using a CFW PSP below.

If you don't have a CFW PSP you can use to mod your batteries, you probably won't have a PSP to make you a Magic Memory Stick either.

Luckily, it's also possible to do this directly through your PC, using Rain's Simple UltraLite MMS Maker. Download it [here](#). The application should work on both Windows XP and Vista.

You're also going to need an official 5.00 eboot file, which you can find [over here](#) ([mirror](#)).



To use the program, just connect and specify your PSP system, check the Format Memory Stick box and push the big Make MMS button.

If this doesn't work for you, you can always download [the more advanced version](#) of Rain's Simple MMS Maker. With this, you can install one of the previous DC versions and upgrade to the latest custom firmware from there.



### Making a MMS Using a CFW PSP

Use this method if the preceding one didn't work.

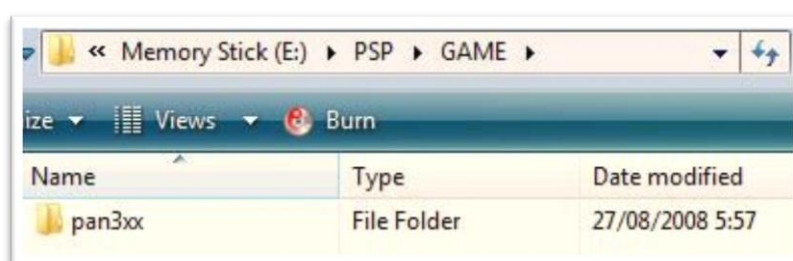
You'll need a CFW PSP – if you haven't got one lying around, try borrowing a friend's.

#### What you need:

- [Pandora Installer for 3.xx Revision 4b](#) (alternative link [here](#))
- [Version 1.50 eboot](#) (alternative link [here](#))
- [Version 3.40 eboot](#) (alternative link [here](#))
- [Version 3.80 eboot](#) (alternative link [here](#))
- [Version 4.01 eboot](#) (alternative link [here](#))
- A Phat<sup>15</sup> PSP with custom firmware
- A Pro Duo memory stick

#### Making your Magic Memory Stick<sup>16</sup>

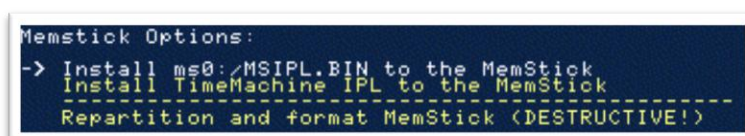
Start out by putting the Pandora Installer on your CFW PSP. Do so by moving the pan3xx folder from the downloaded archive to E:\PSP\GAME (where E: is your PSP).



Go out of USB mode, navigate to **Game -> Memory Stick™** and click on the Pandora Installer to start the application.



In the application, go to '**MemStick and MS-IPL options**' and select '**Repartition**'.



When your PSP has restarted, connect through USB and recreate the E:\PSP\GAME hierarchy. Again, drop the pan3xx folder in here.

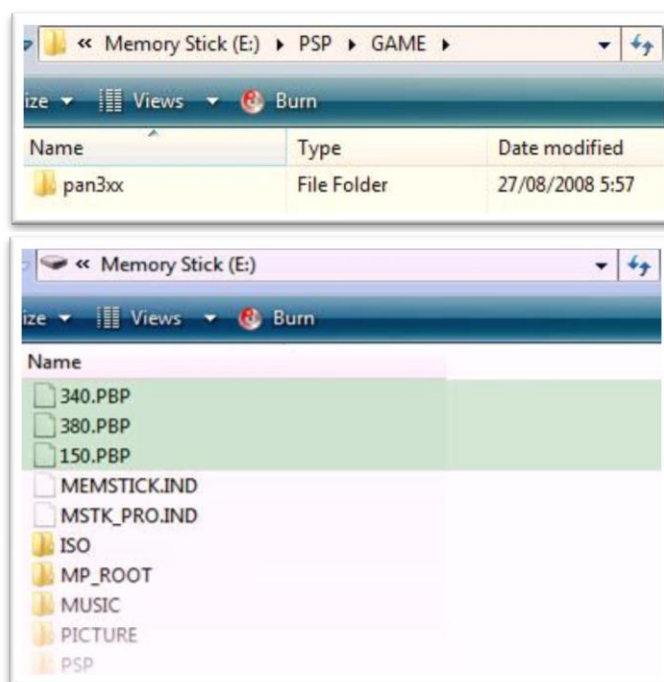
This time you must also put the versions 1.50, 3.40, 3.80 and 4.01 eboot<sup>17</sup> files in the PSP's root (main folder) and name them respectively 150.PBP, 340.PBP, 380.PBP and 401.PBP

<sup>15</sup> The 'fat', and first version of the PSP

<sup>16</sup> A special memory stick which hosts the files needed by the Pandora Battery, aka MMS

<sup>17</sup> The default name of an executable PSP file





Go out of USB mode again, navigate to **Game -> Memory Stick™** and click on the Pandora Installer to restart the application.

This time, select **Install a DDCv7 MagicStick (for Fat + Slim)**, this is the version that works best with both Phat and Slim PSPs, and wait for it to finish. Then, install the ELF-Menu and NAND-Tool. Finally, go to MemStick options and choose to install MSIPL. Some of you might not find all of this necessary, but there are PSPs that give trouble without it.

If you are having troubles using the MMS, you should try one of the later DDC versions, like DDCv4, or install the proper [1.50 Kernel add-on](#) if you're at CFW 3.71 or above.

Alternatively (if you're on a Mac or Linux computer), you can always try the preceding method at a friend's place – only takes a minute and finding a Windows computer shouldn't be too hard nowadays.

### Using your JigKick Battery

Now that you've successfully made your Pandora or JigKick Battery and Magic Memory Stick, you obviously want to know how to use them.

Make sure you have your Magic Memory Stick inserted and put in your battery, a black and white menu should pop-up. Then, go to recover and choose to install the Custom Firmware (M33). This can take a while, so please be patient – grab a pot of coffee and ~~watch some anime~~ work a little in the meantime.

If you used Rain's Ultra Lite MMS Installer, you'll be able to go straight to CFW 5.00 M33-4, the other method should've gotten you at 3.80 M33.

### Upgrade to the Latest Custom Firmware

As you might have noticed, you're on CFW 3.80 M33 now; that isn't very high up the ladder, considering CFW 5.00 M33-3 is already available (or even higher, by the time you read this). Follow the steps below to upgrade to the latest custom firmware.

#### Files you need:

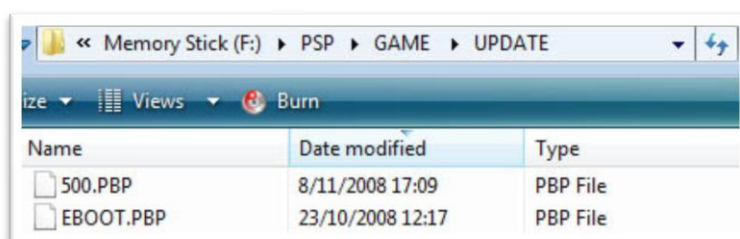
- The latest M33 Firmware version ([5.00-6](#) at the time of writing - [mirror](#))
- The parallel official firmware ([5.00](#) in this case - [mirror](#))

#### a) File placement

Extract the downloaded archives.

Move the unrarred UPDATE folder to X:\PSP\GAME\UPDATE (with X: being your PSP). If you came from a completely previous firmware (like 3.70 M33), also add the parallel official firmware to that folder.

Rename the official firmware in a plain three-number format, in the like of 500.PBP, and the update to EBOOT.PBP



#### b) Updating

Go to Game -> Memory Stick™ and open the installation file. After verifying the eboot, it'll ask you for confirmation. Press X to continue.

Follow the on-screen instructions to update. The update will take five minutes or less.

Congratulations, you are now on the latest M33 custom firmware! Have fun!



## FAQ – Frequently Asked Questions

*For all of those who didn't pay enough attention or have an uncontrollable hunger for knowledge ;-)*

**I've got a PSP-XXXX, can I downgrade? Please help!**

Though answered multiple times during the guide, a much returning question.

All PSPs can be downgraded/cracked, except the **PSP-3000** (and up) and the **PSP-2004** **with** a **TA88v3** motherboard. These are the ones that come pre-installed with FW version 4.01 or 4.05.

**When using a Pandora Battery, does it matter what firmware version I'm currently on?**

No it doesn't.

**What's a CFW PSP?**

CFW stands for **C**ustom **F**irmware, which means that it's already 'cracked'.

**Is there a way to downgrade >3.50 FWs without the use of a Pandora Battery?**

No there isn't.

**Do I need a Pandora Battery to boot or upgrade my current Custom Firmware?**

No, you can use a normal battery for that.

**The files of 'Pandora Installer' turn out to be corrupt!**

Make sure you're using a CFW PSP (see above) and try another source. Also check if you've put them in the correct folder.

**My JigKick Battery works just like a normal battery!**

It means that the pandorization has failed, you'll need to give it another shot.

**The power light turns green but the screen remains plain black**

This means that your JigKick is working correctly, but your MMS isn't. Try recreating it using the same, or a different method.

**How do I reverse the battery pandorization?**

If you softmodded your battery, you can reverse the process using the same application you used to make it.

Hardmodded batteries need additional soldering, and reversing TOOL batteries is simply impossible.

**How do I reverse the MMS making process?**

Just format your memory stick.

**I'm getting a 'PSAR decode error'**

This means that your JigKick is working correctly, but your MMS isn't. Try recreating it using the same, or a different method.

**Do I have to upgrade to the latest CFW version?**

You don't *have* to update, but it certainly won't do any harm.

Newer firmware versions includes bug fixes, general improvements and all new features that are included in the official 5.00 upgrade.

### Can I run homebrew or run ISOs without installing a CFW?

You either need to be on FW 1.00, FW 1.50 or one of the custom firmwares (OE or M33)

### I have a working >8GB MMS, you're talking nonsense!

Problems occur more often with >8GB memory sticks. That doesn't mean it's impossible with them though.

### What should I create first? The JigKick Battery or the MMS?

This doesn't really matter. Just know that you won't be able to boot a PSP normally with a JigKick battery – hence it might be harder to create the MMS after.

### How can I boot my PSP normally with a JigKick battery?

Sorry, this isn't possible. Just plug in your power adapter.

### Does the battery *have* to be over 80% for some processes? Can't I just plug in the power adapter?

In theory, you can, but for safety reasons (you're working with delicate parts of your system), some apps do require your battery to be charged over 80%.

### Will I be able to access the PSN with a CFW PSP?

You will be able to with the newest custom firmwares.

### How do I play ISO/CMD files?

Though this is actually a down/upgrading guide, a many lot of people ask this.

If you've got a CFW PSP it'll suffice to put them in a X:\ISO folder (with X being your PSP). You also need to have a random UMD inserted.

You can configure the PSP to boot ISO/CSO files without a UMD inserted, in the recovery menu (hold trigger while booting).

Please only use these files if you have the original games in your possession. Not just because MUO disapproves piracy, but because it's wrong and you'll burn in hell for it.

### Can I run a OFW/CFW dualboot?

Try googling for "psp time machine" (without the quotation marks)

### Will the PSP-2004 TA88v3 and PSP-3000 exploits be with the Pandora Battery as well?

No way to say that for sure, but it's highly probable.

### When will the PSP-2004 TA88v3 and PSP-3000 be cracked?

If they succeed in dumping the 4.00+ IPL, they'll be able to make a MMS that works with the TA88v3 motherboards. Chances are pretty good that the PSP-3000 will fall somewhere around the same time.

## Thank You!



It's no more than fair to say a brief thank you to [Dark Alex](#), for everything he has done on the scene. The guy's a legend, and he deserves it.



QJ.net's [PSP Updates](#) got me introduced to the homebrew scene and has guided me ever since. A wonderful site, and one that every self-respecting PSP user should check from time to time.



Also be sure to check out [PSPMod](#) and [PSP-Hacks](#), two other great sites that wander about the homebrew scene.